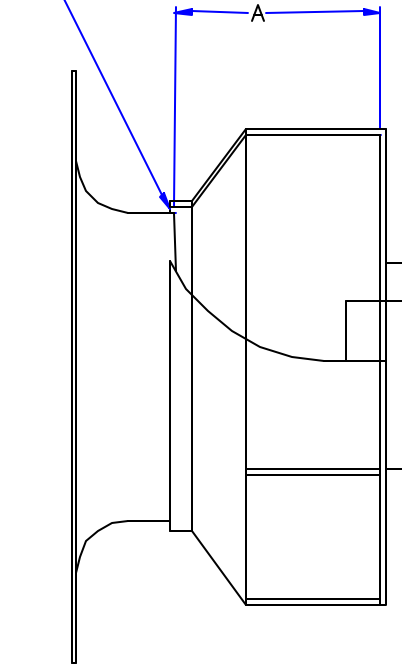


DISTANCE FROM WHEEL BACK PLATE TO INSIDE EDGE OF INLET CONE (A)

UNIT	WHEEL	A (IN.)	
ME500XF	TEK250	4.20	(4 $\frac{3}{16}$)
ME800XF	TEK280	4.75	(4 $\frac{3}{8}$)
ME1400XF	TEK315	5.29	(5 $\frac{5}{16}$)
ME2000XF	TEK315	5.29	(5 $\frac{5}{16}$)
ME2500XF	TEK355	6.08	(6 $\frac{1}{8}$)
ME4000XF	ACF18 (53.2%)	3.87	(3 $\frac{7}{8}$)
ME6000XF	ACF18 (79.7%)	5.64	(5 $\frac{5}{8}$)

UNIFORM CLEARANCE



REVISIONS

REV.	CHANGES	REV. BY	DATE	APP'D
A	ADD ME1400 (TEK315)	WK	APR16/02	
*				
*				
*				
*				

TOLERANCES

UNLESS OTHERWISE SPECIFIED
DIMENSIONS ARE IN INCHES
 • FRACTIONAL $\pm .0625$
 • DECIMAL .XX $\pm .025$
 .XXX $\pm .005$
 • ANGLES ± 1

THIS PRINT IS THE PROPERTY OF NUTECH ENERGY SYSTEMS. COPYING, TRANSMITTAL TO OTHERS, OR USE IN ANY WAY THAT IS DETRIMENTAL TO OUR INTERESTS IS STRICTLY PROHIBITED.



511 McCormick Blvd.
London, Ontario Canada N5W 4C8

TITLE

BLOWER OVERLAP CHART

DRAWN BY WK	DATE MAR 10/01	SCALE	DO NOT SCALE DRAWING	MATERIAL
CHECKED	DATE	APP'D		DRAWING NO
NEXT ASSY				10599